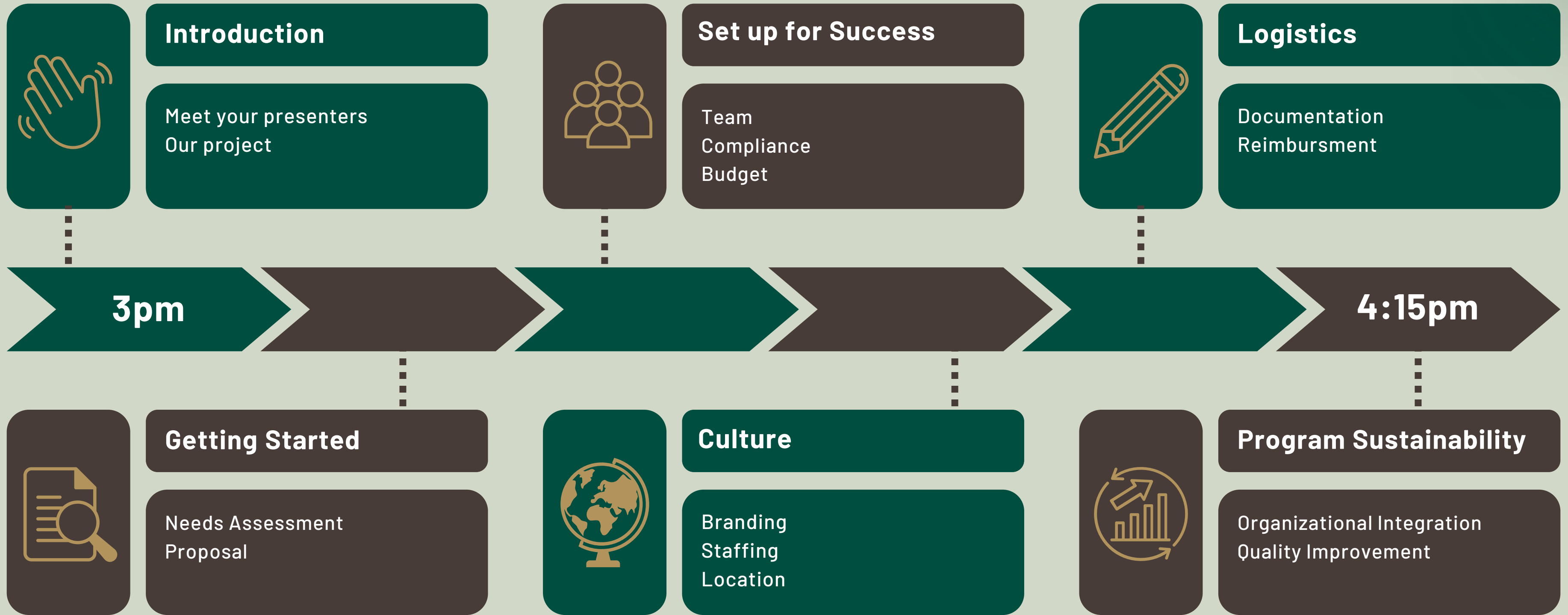


CULTURALLY REFLECTIVE REHABILITATION PROGRAM DEVELOPMENT



REHABILITATION PROGRAM DEVELOPMENT

PT/OT+ for Tribal Health Organizations





Aiy-ye-kwee nek-new

Rob England, MA (he/him), Yurok, UIHS Tribal Public Health Director





Hi, there

Kathryn LP Biesanz, OTD, OTR/L (she/her), UIHS Rehabilitation Project Coordinator

Ghes na'dvn

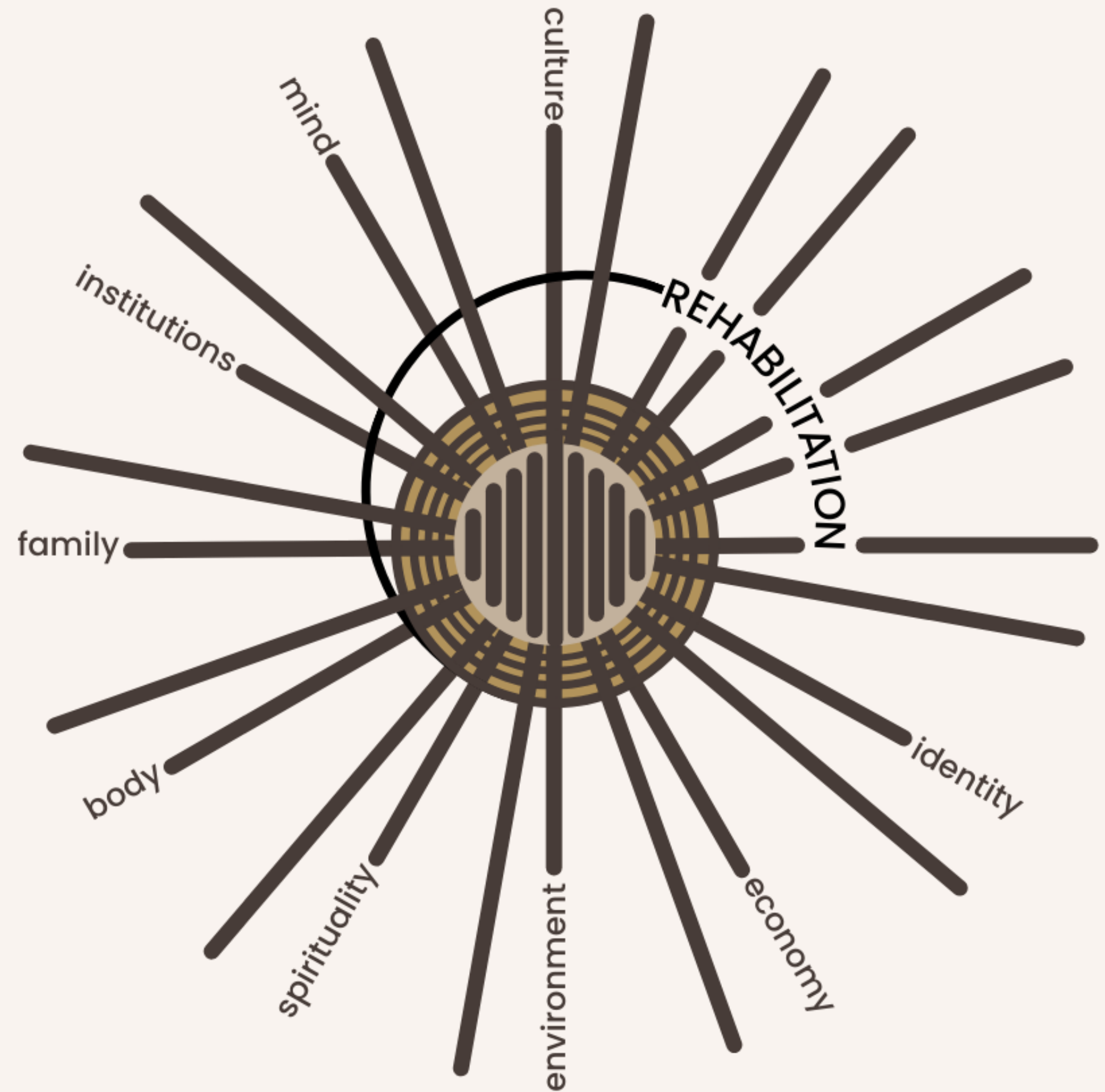
Tolowa - "well place"

We value caring for the whole person. We focus our resources on the promotion of health and prevention of illness. We recognize that social, environmental, cultural, spiritual and economic wellness is vital for the overall health of our community and organization; we support and promote actions that bring these elements into balance.

unitedindianhealthservices.org

PT/OT

**Collaborative
Rehabilitation
Services**



Needs Assessment

Community Feedback

“Extended range of services, hours and days.”

Respondents wanted to see the expansion of services to include dentistry, specialist and specialty services such as PT and OT, diabetes services, optometry, behavioral health, counseling, and more.

Add specialist care providers (I need a physical therapist and GI DOC and other specialists).

Imagine...



You have a brand

You want to expand your online presence

You know a bit about web development

So you ask your stakeholders, "*do we need
hypertext transfer protocol security?*"

Imagine...



You have a brand

You want to expand your online presence

You know a bit about web development

So you ask your stakeholders, "do we need
hypertext transfer protocol security?"

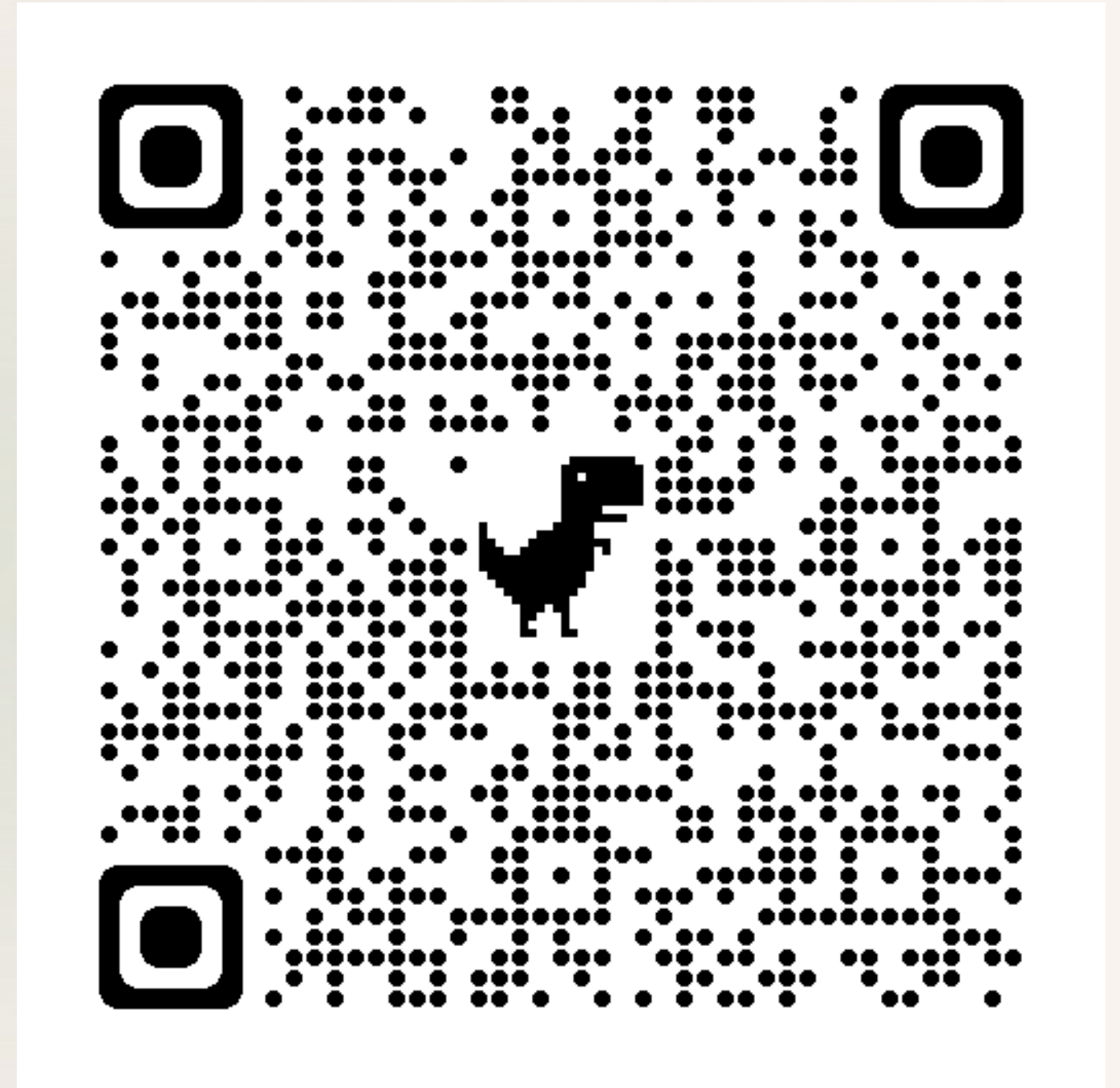


How do you respond?

A Not respond because you
don't know what that is

B Respond YES because
security is good

C Respond NO because "hypertext
transfer" is suspicious



Imagine...



You have a brand

You want to expand your online presence
You know a bit about web development
So you ask your stakeholders, "do we need
hypertext transfer protocol security?"

In reality...

You have a clinic

You want to expand your services
You know a bit about rehabilitation
So you ask your stakeholders, "do we need
physical and occupational therapy?"

How do you respond?

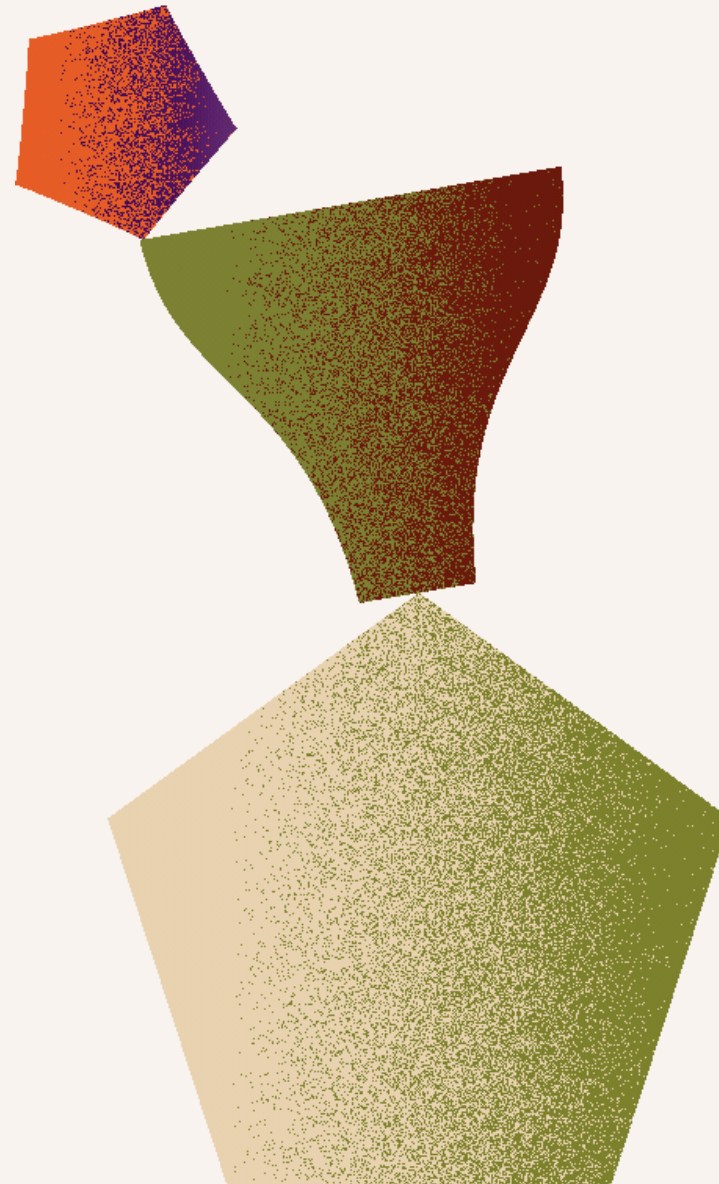
- A** Not respond because you don't know what that is
- B** Respond YES because security is good
- C** Respond NO because "hypertext transfer" is suspicious
-



Proposal Writing

Generate Excitement

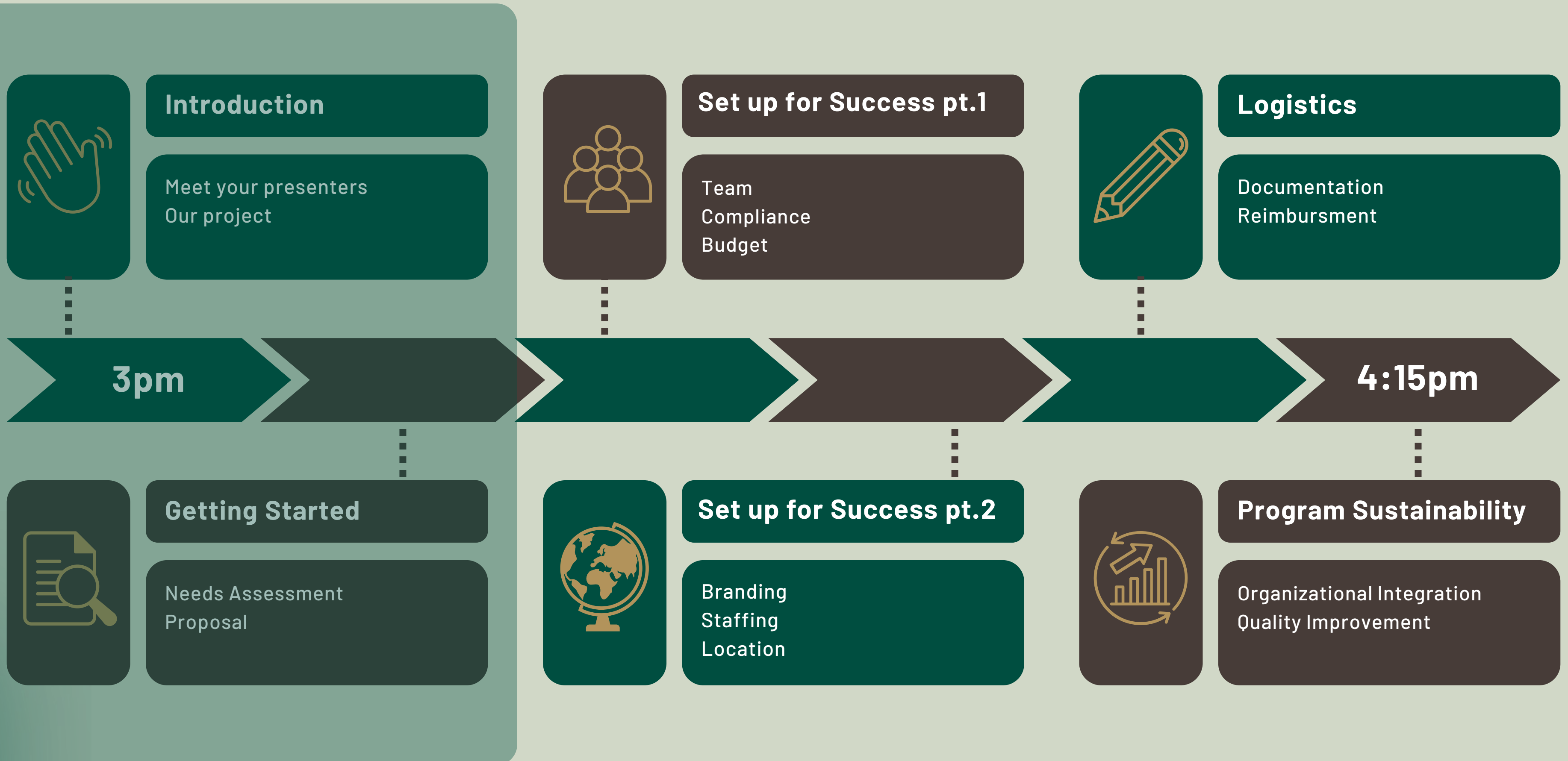
Room to Change



← How much detail to provide? →

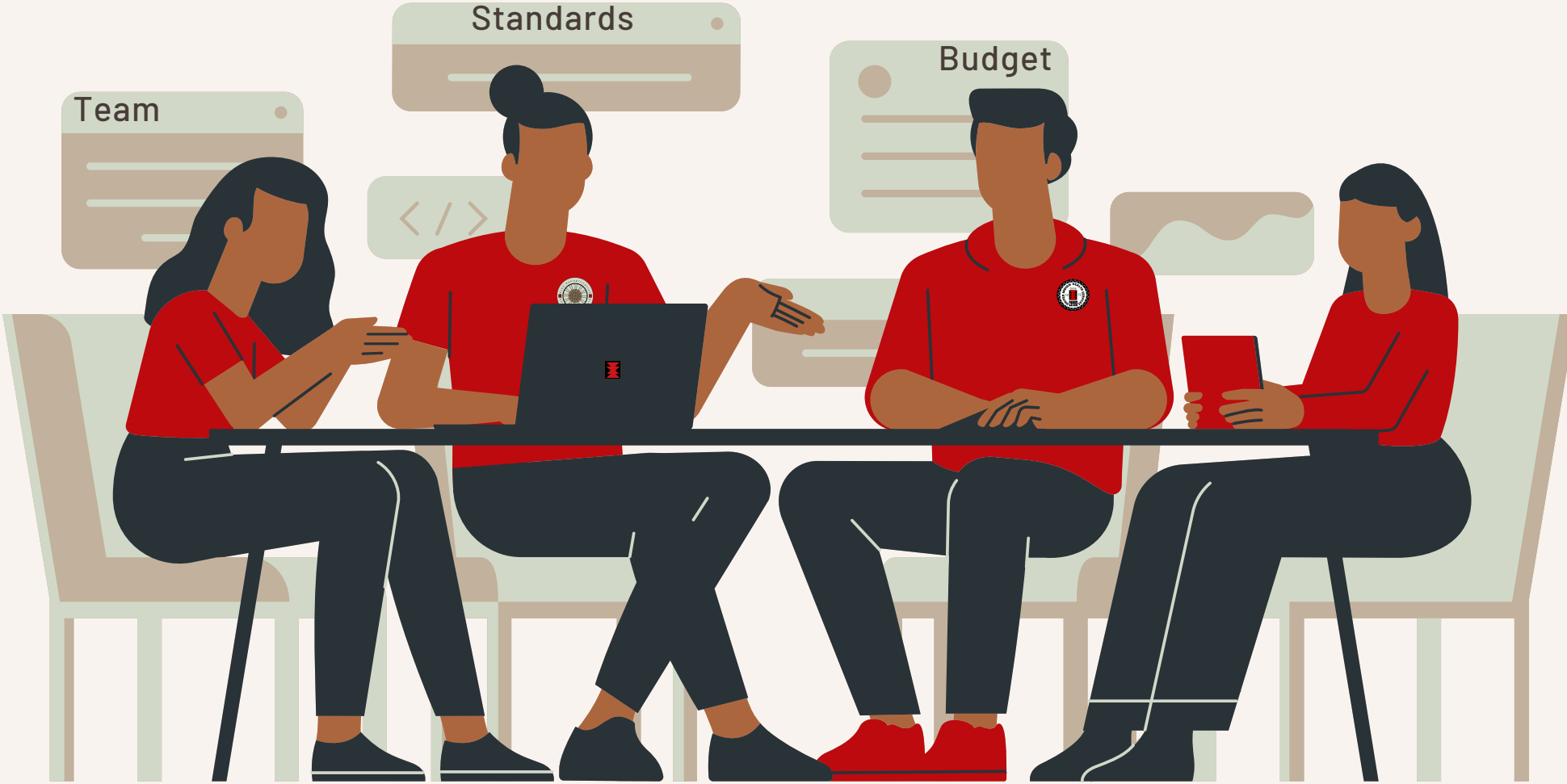
REHABILITATION PROGRAM DEVELOPMENT

PT/OT+ for Tribal Health Organizations



Setting up for Success

The intangibles



Setting up for Success

The intangibles



Setting up for Success

The intangibles



Setting up for Success

The intangibles





Setting up for Success

Putting it into practice



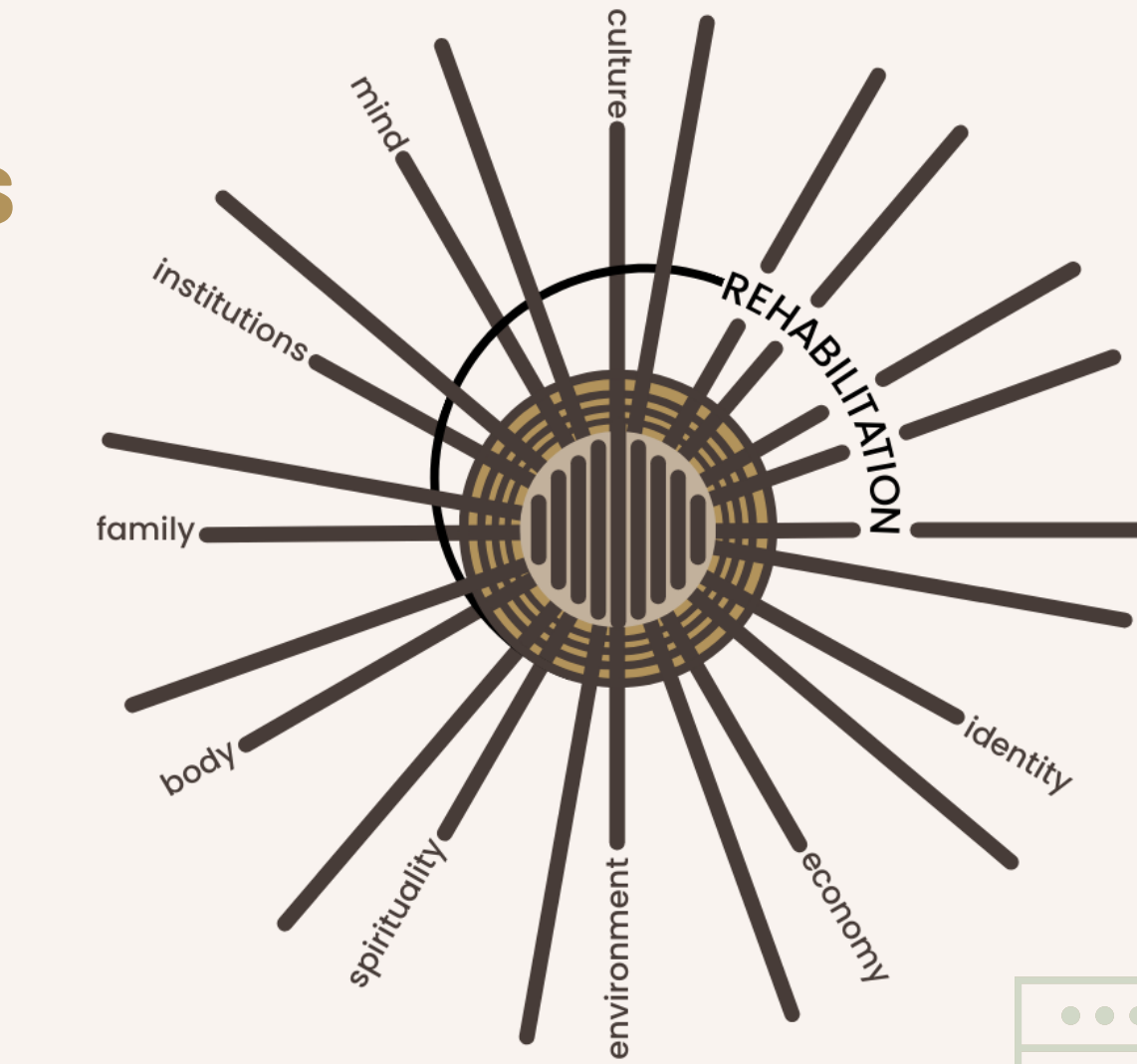
Setting up for Success

Putting it into practice



Setting up for Success

Putting it into practice

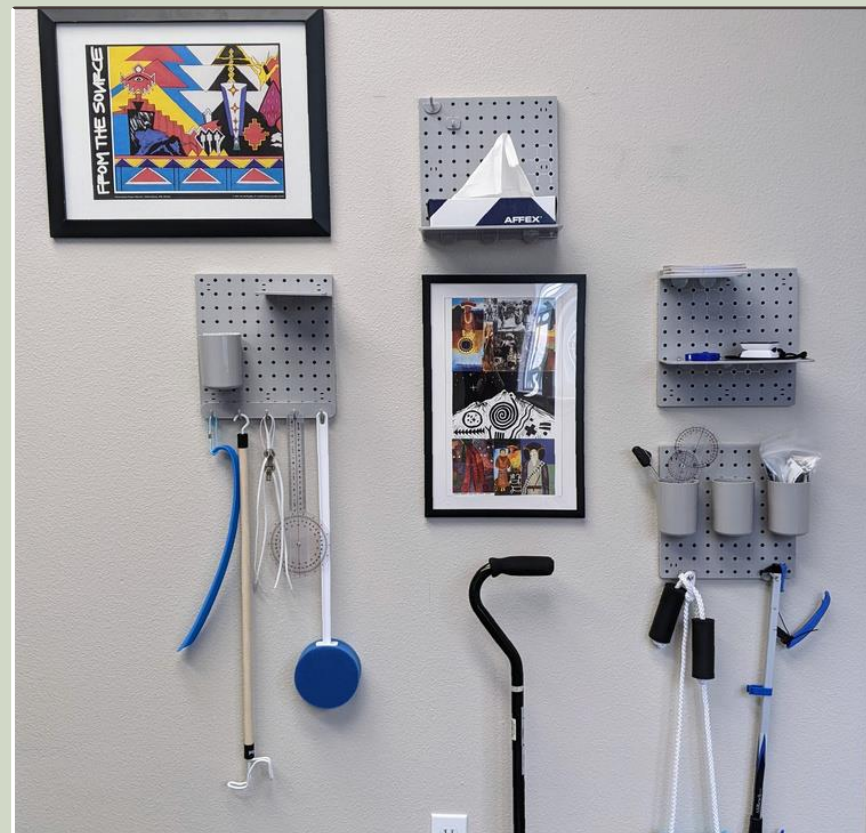


Setting up for Success

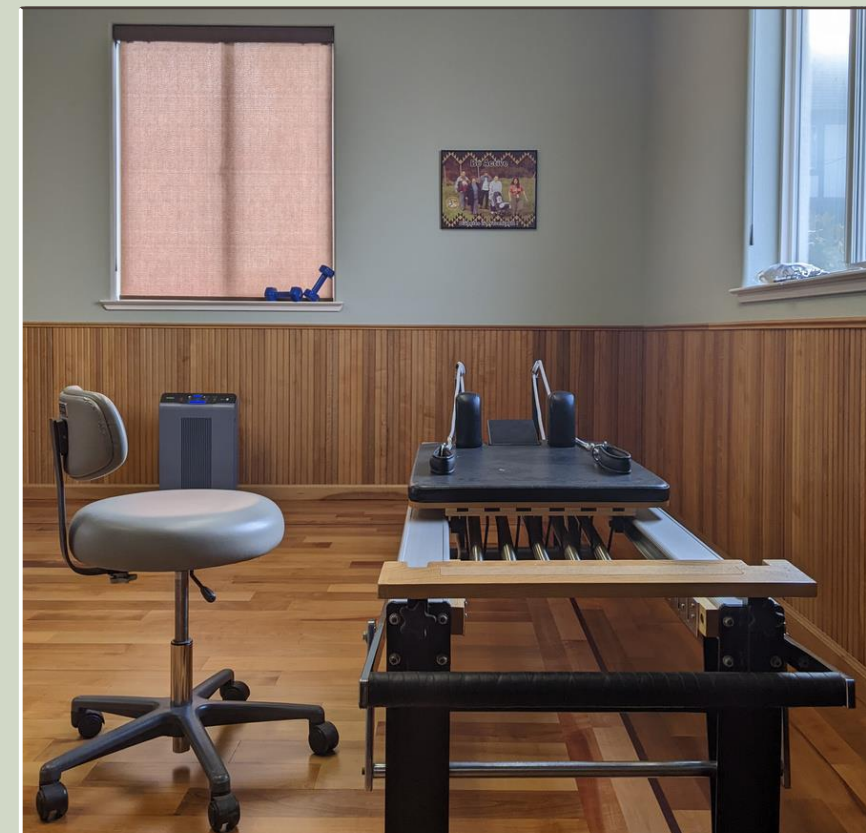
Putting it into practice



Therapy Space



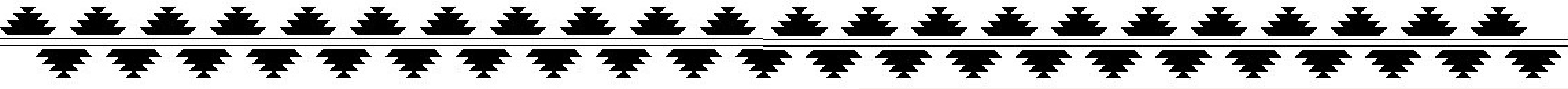
ADL equipment



Gym Space



Fine Motor Equipment



A note on staffing & hiring...

& the big picture of native representation in healthcare

May gay tolh kway

Yurok - a healing place

"We strive to provide the best healthcare services in an environment that is welcoming, healing and nurturing for all. We hire qualified staff and commit ourselves to recruiting American Indians at all levels. We value every staff member and support the development of each employee's potential while optimizing their skills and contributions."

unitedindianhealthservices.org



A note on staffing & hiring...

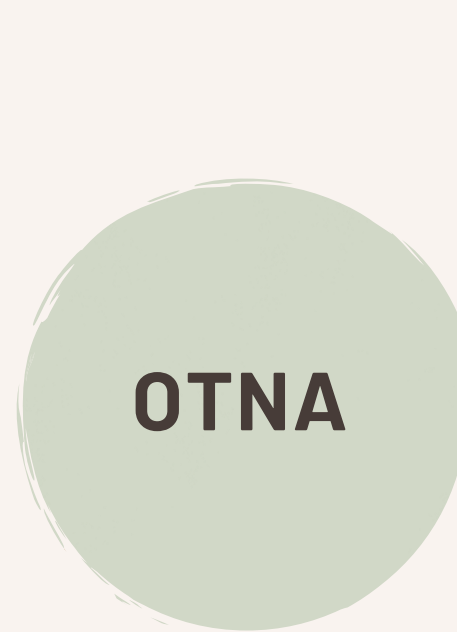
& the big picture of native representation in healthcare

May gay tolh kway

Yurok - a healing place

"We strive to provide the best healthcare services in an environment that is welcoming, healing and nurturing for all. We hire qualified staff and commit ourselves to recruiting American Indians at all levels. We value every staff member and support the development of each employee's potential while optimizing their skills and contributions."

unitedindianhealthservices.org



A note on staffing & hiring...

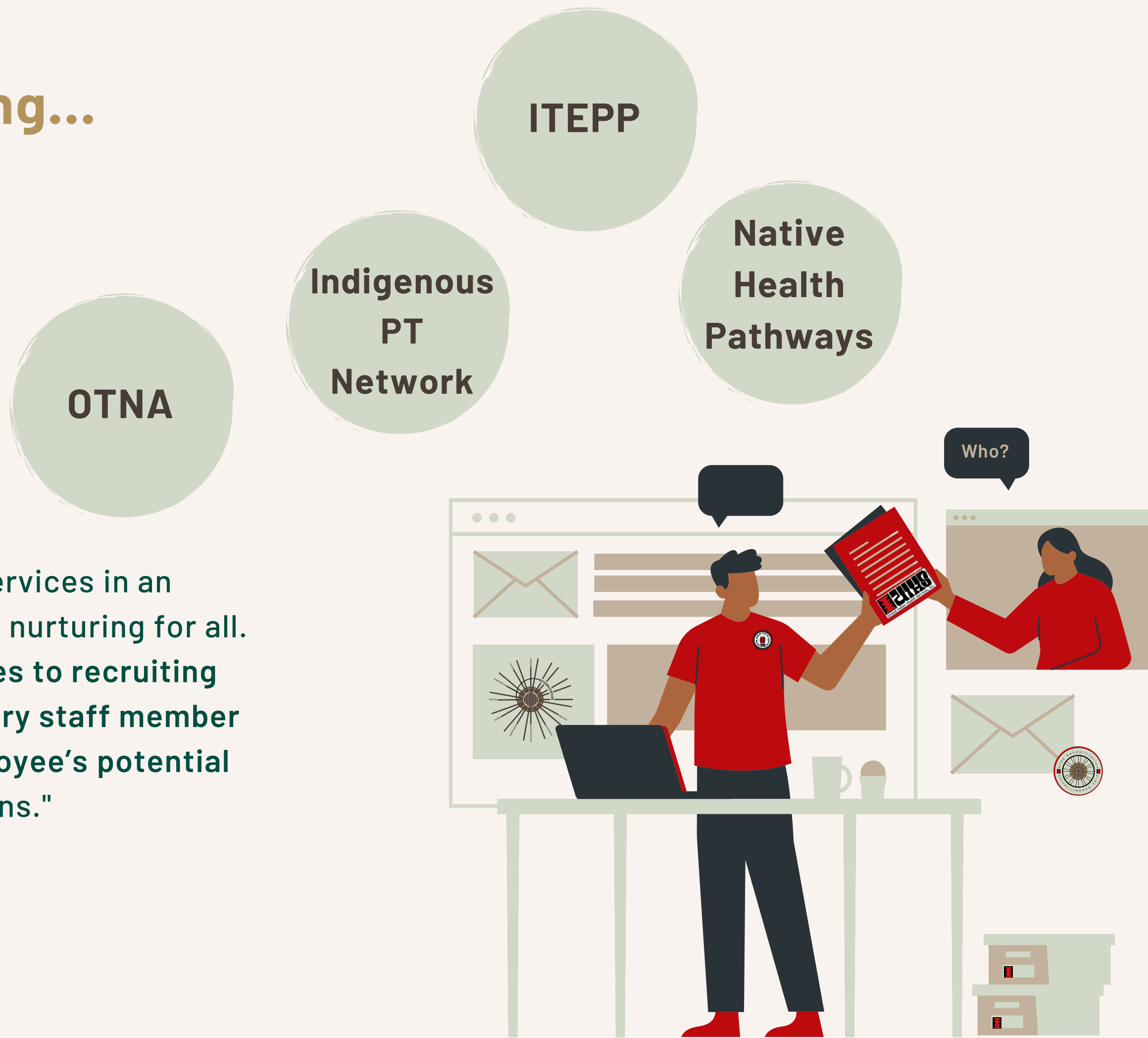
& the big picture of native representation in healthcare

May gay tolh kway

Yurok - a healing place

"We strive to provide the best healthcare services in an environment that is welcoming, healing and nurturing for all. We hire qualified staff and commit ourselves to recruiting American Indians at all levels. We value every staff member and support the development of each employee's potential while optimizing their skills and contributions."

unitedindianhealthservices.org



A note on staffing & hiring...

& the big picture of native representation in healthcare

Healthy providers provide for health patients!

Mentorship

May gay tolh kway

Yurok - a healing place

"We strive to provide the best healthcare services in an environment that is welcoming, healing and nurturing for all. We hire qualified staff and commit ourselves to recruiting American Indians at all levels. We value every staff member and support the development of each employee's potential while optimizing their skills and contributions."

unitedindianhealthservices.org



A note on staffing & hiring...

& the big picture of native representation in healthcare

Mentorship

Healthy providers provide for health patients!

Cultural Trainings

Culture Day

May gay tolh kway

Yurok - a healing place

"We strive to provide the best healthcare services in an environment that is welcoming, healing and nurturing for all. We hire qualified staff and commit ourselves to recruiting American Indians at all levels. We value every staff member and support the development of each employee's potential while optimizing their skills and contributions."

unitedindianhealthservices.org



REHABILITATION PROGRAM DEVELOPMENT

PT/OT+ for Tribal Health Organizations



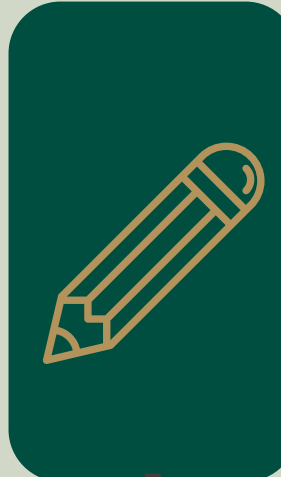
Introduction

Meet your presenters
Our project



Set up for Success

Team
Compliance
Budget



Logistics

Documentation
Reimbursement

3pm



4:15pm



Getting Started

Needs Assessment
Proposal



Culture

Branding
Staffing
Location



Program Sustainability

Organizational Integration
Quality Improvement

Logistics

Documentation

Evaluation Note

S

O

A

P

Plan of Care

+

The Epic logo features the word "Epic" in a white, bold, sans-serif font, set against a solid red rectangular background.The NextGen Healthcare logo consists of the word "nextgen" in a dark blue, lowercase sans-serif font, with "healthcare" in a smaller, lighter blue font below it. To the left of the text is a stylized orange and red geometric shape.The WebPT logo features the text "WebPT" in a bold, blue, sans-serif font, with a registered trademark symbol (®) to the upper right of the "T".

Logistics

Reimbursement

| CPT Code | Name |
|----------|------------------------------------|
| 97010 | Hot or Cold Pack Modality |
| 97014 | Electrical Stimulation |
| 97161 | Low Complexity PT Evaluation |
| 97162 | Moderate Complexity PT Evaluation |
| 97163 | High Complexity PT Evaluation |
| 97164 | PT Re-evaluation |
| 97165 | Low Complexity OT Evaluation |
| 97166 | Moderate Complexity OT Evaluation |
| 97167 | High Complexity OT Evaluation |
| 97168 | OT Re-evaluation |
| 97110 | Therapeutic Procedure |
| 97112 | Neuromuscular Reeducation |
| 97116 | Gait Training |
| 97124 | Massage |
| 97129 | Therapeutic Intervention for Cog. |
| 97140 | Manual Therapies |
| 97530 | Therapeutic Activities |
| 97535 | Self-care/Home Management Training |
| 97537 | Community/Work Reintegration |
| 97542 | Wheelchair Management |
| 97760 | Orthotic Management and Training |
| 97761 | Prosthetic Training |

Logistics

Reimbursement

| CPT Code | Name |
|----------|------------------------------------|
| 97010 | Hot or Cold Pack Modality |
| 97014 | Electrical Stimulation |
| 97161 | Low Complexity PT Evaluation |
| 97162 | Moderate Complexity PT Evaluation |
| 97163 | High Complexity PT Evaluation |
| 97164 | PT Re-evaluation |
| 97165 | Low Complexity OT Evaluation |
| 97166 | Moderate Complexity OT Evaluation |
| 97167 | High Complexity OT Evaluation |
| 97168 | OT Re-evaluation |
| 97110 | Therapeutic Procedure |
| 97112 | Neuromuscular Reeducation |
| 97116 | Gait Training |
| 97124 | Massage |
| 97129 | Therapeutic Intervention for Cog. |
| 97140 | Manual Therapies |
| 97530 | Therapeutic Activities |
| 97535 | Self-care/Home Management Training |
| 97537 | Community/Work Reintegration |
| 97542 | Wheelchair Management |
| 97760 | Orthotic Management and Training |
| 97761 | Prosthetic Training |



Logistics

Reimbursement

| CPT Code | Name |
|----------|------------------------------------|
| 97010 | Hot or Cold Pack Modality |
| 97014 | Electrical Stimulation |
| 97161 | Low Complexity PT Evaluation |
| 97162 | Moderate Complexity PT Evaluation |
| 97163 | High Complexity PT Evaluation |
| 97164 | PT Re-evaluation |
| 97165 | Low Complexity OT Evaluation |
| 97166 | Moderate Complexity OT Evaluation |
| 97167 | High Complexity OT Evaluation |
| 97168 | OT Re-evaluation |
| 97110 | Therapeutic Procedure |
| 97112 | Neuromuscular Reeducation |
| 97116 | Gait Training |
| 97124 | Massage |
| 97129 | Therapeutic Intervention for Cog. |
| 97140 | Manual Therapies |
| 97530 | Therapeutic Activities |
| 97535 | Self-care/Home Management Training |
| 97537 | Community/Work Reintegration |
| 97542 | Wheelchair Management |
| 97760 | Orthotic Management and Training |
| 97761 | Prosthetic Training |



What about...



"Education and training for patient self-management"

Logistics

Reimbursement

| CPT Code | Name |
|----------|------------------------------------|
| 97010 | Hot or Cold Pack Modality |
| 97014 | Electrical Stimulation |
| 97161 | Low Complexity PT Evaluation |
| 97162 | Moderate Complexity PT Evaluation |
| 97163 | High Complexity PT Evaluation |
| 97164 | PT Re-evaluation |
| 97165 | Low Complexity OT Evaluation |
| 97166 | Moderate Complexity OT Evaluation |
| 97167 | High Complexity OT Evaluation |
| 97168 | OT Re-evaluation |
| 97110 | Therapeutic Procedure |
| 97112 | Neuromuscular Reeducation |
| 97116 | Gait Training |
| 97124 | Massage |
| 97129 | Therapeutic Intervention for Cog. |
| 97140 | Manual Therapies |
| 97530 | Therapeutic Activities |
| 97535 | Self-care/Home Management Training |
| 97537 | Community/Work Reintegration |
| 97542 | Wheelchair Management |
| 97760 | Orthotic Management and Training |
| 97761 | Prosthetic Training |



What about...

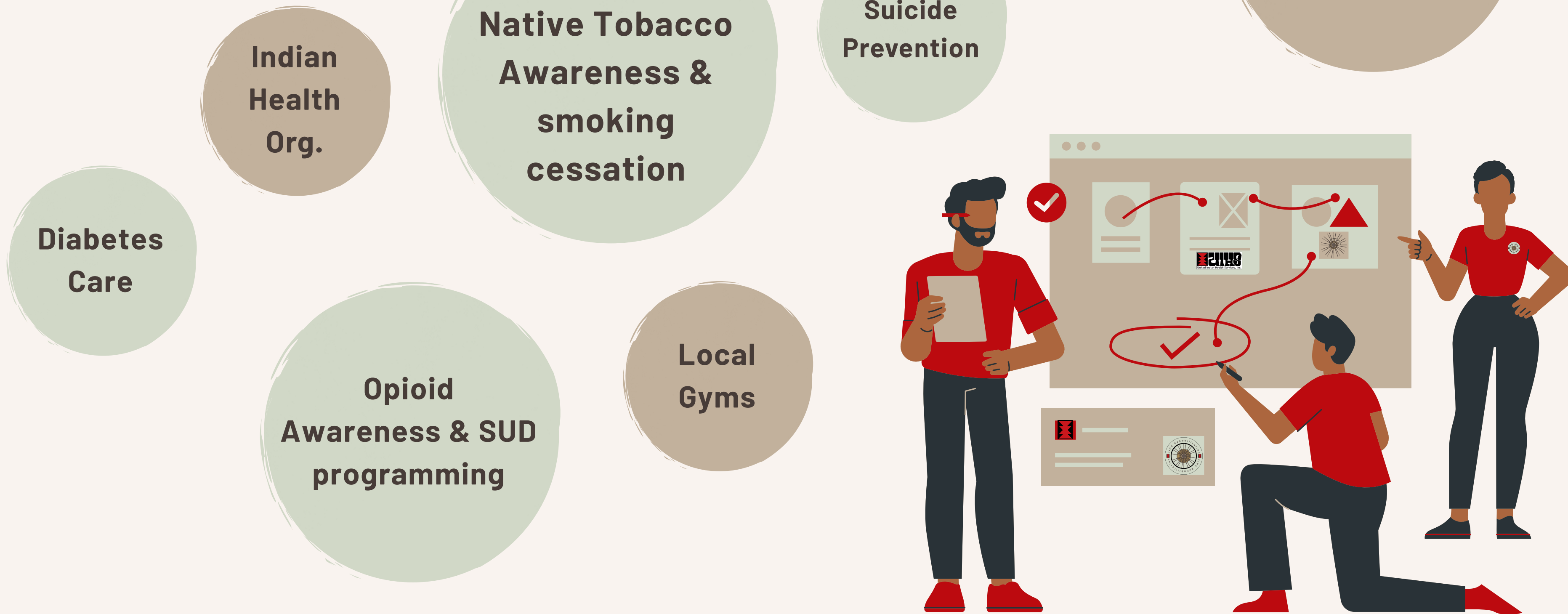


"Education and training for patient self-management"

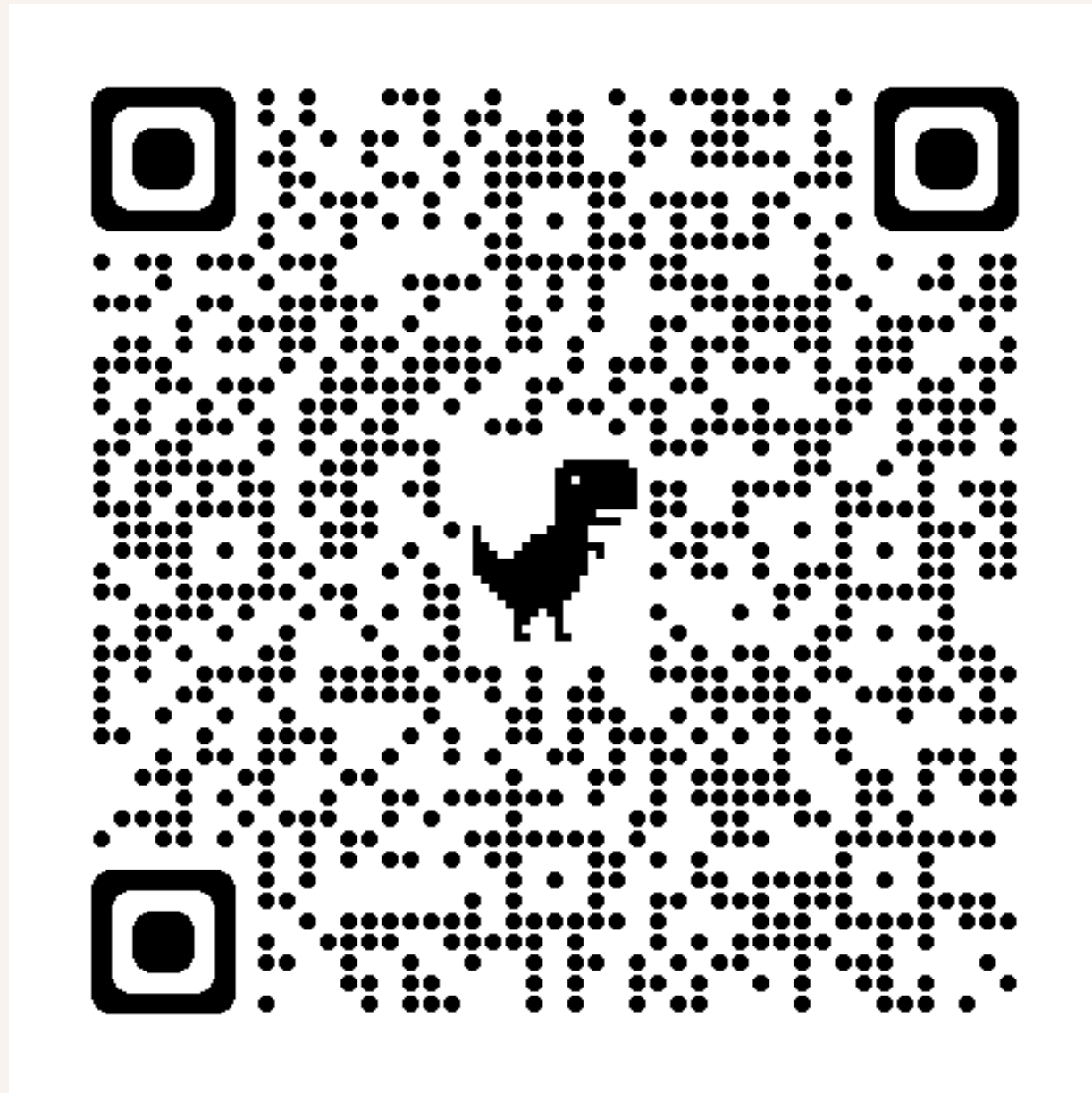
Medicare Benefit Policy Manual, Chapter 15, Section 220

Organizational & Community Integration

The continuum of care



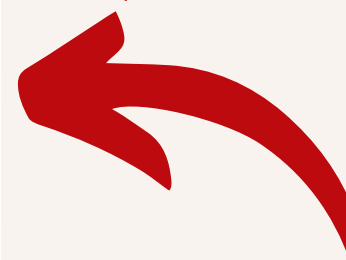
Let's collaborate on Browser Board



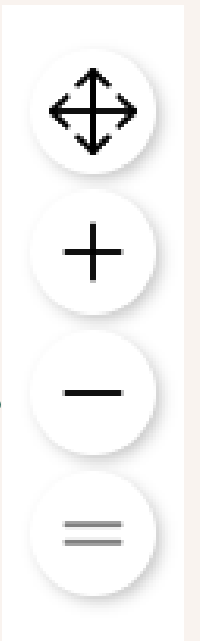
To create a sticky note



To type text



To zoom
your
screen



Quality Assurance

Meeting Standards

- ➔ **Peer Reviews**
- ➔ **Ongoing outcomes measurement**
- ➔ **Annual improvement planning**
- ➔ **Dissemination**



Quality Assurance

Meeting Standards

Mentorship

Community
Org

➔ Peer Reviews

➔ Ongoing outcomes measurement

➔ Annual improvement planning

➔ Dissemination



carf INTERNATIONAL

Quality Assurance

Meeting Standards

Mentorship

Community
Org

➔ Peer Reviews

➔ Ongoing outcomes measurement

➔ Annual improvement planning

➔ Dissemination



Quality Assurance

Meeting Standards

Mentorship

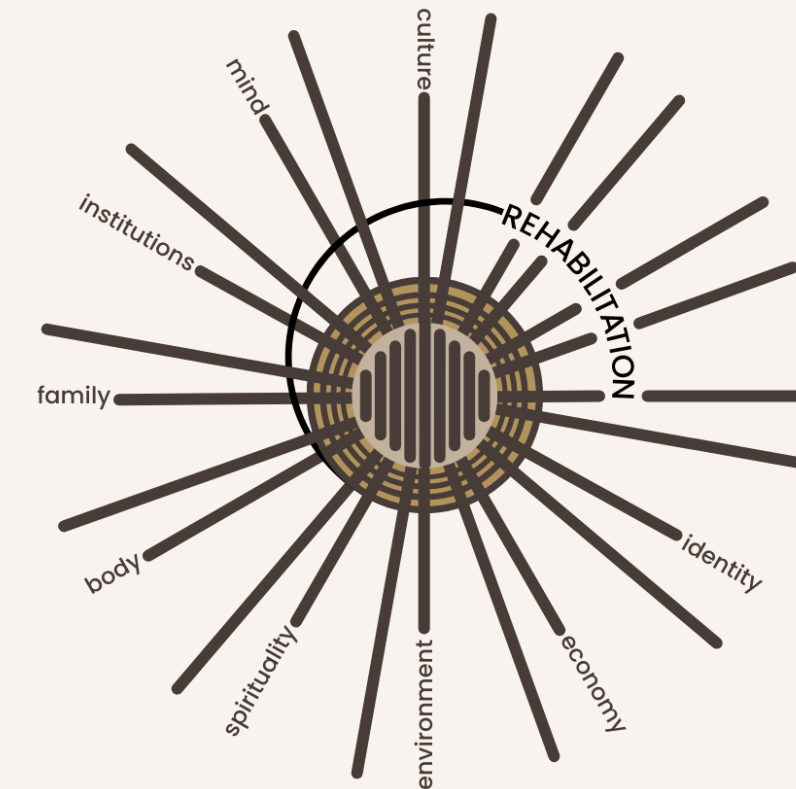
Community
Org

➔ Peer Reviews

➔ Ongoing outcomes measurement

➔ Annual improvement planning

➔ Dissemination



Quality Assurance

Meeting Standards

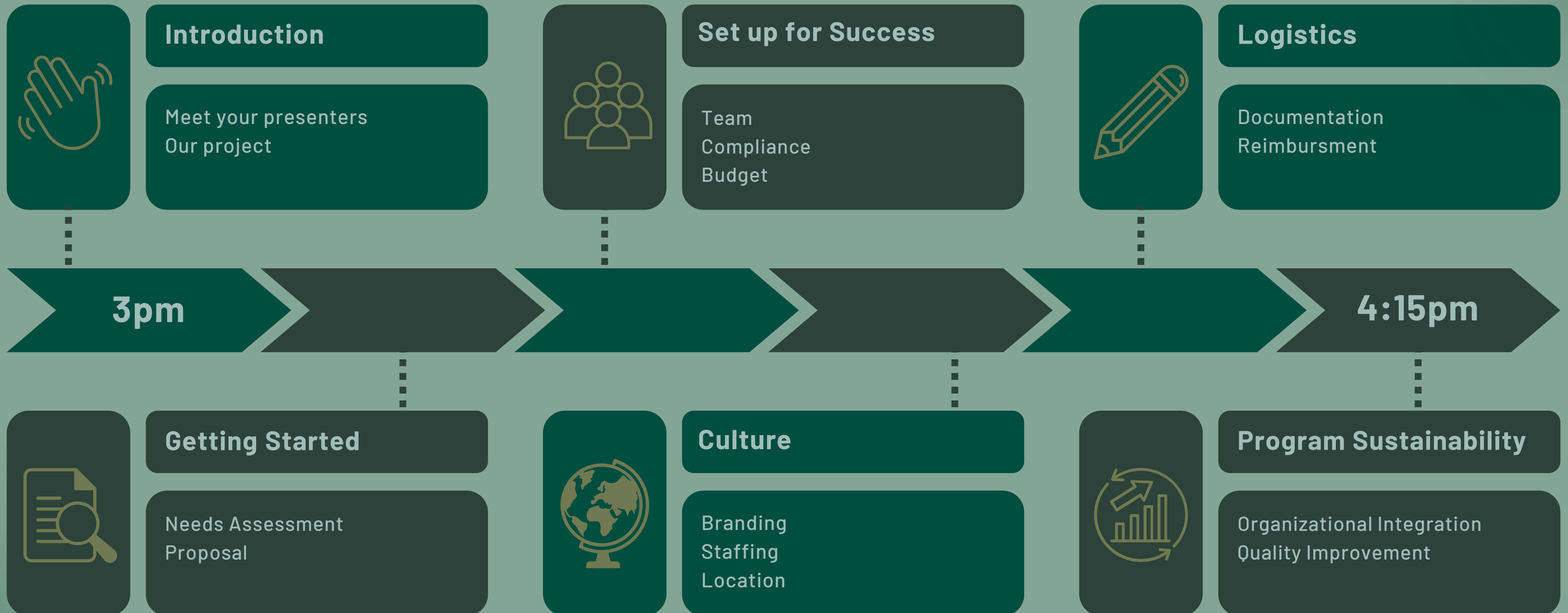


- ➔ Peer Reviews
- ➔ Ongoing outcomes measurement
- ➔ Annual improvement planning
- ➔ Dissemination



REHABILITATION PROGRAM DEVELOPMENT

PT/OT+ for Tribal Health Organizations



Thank you!



Rob England, MA (he/him), Yurok, UIHS Tribal Public Health Director
rob.english@uihs.org



Kathryn LP Biesanz, OTD, OTR/L (she/her), UIHS Rehabilitation Project Coordinator
kathryn.biesanz@uihs.org

